

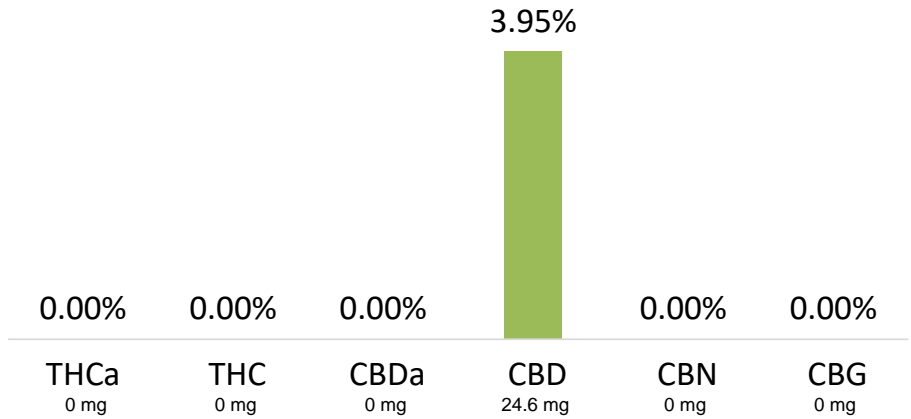
AFCgel25

Batch ID:	N/A
Reported:	18-Jul-2018
Type:	Edible
Test:	Potency

CANNABINOID PROFILE



- Total Potential THC 0mg **
- Total Potential CBD 24.6mg **



** Total Potential THC/CBD is calculated using the following formulas to take into account the loss of a carboxyl group during decarboxylation step.

Total THC = THC + (THCa * (0.877)) and Total CBD = CBD + (CBDa * (0.877))

% = % (w/w) = Percent (Weight of Analyte / Weight of Product)

NOTES:

Free from visual mold, mildew, and foreign matter.
of Servings = 1, Sample/Fill Weight = 0.62305g

FINAL APPROVAL

 Karen Winternheimer
18-Jul-2018
5:32 PM

PREPARED BY / DATE

 David Green
18-Jul-2018
5:34 PM

APPROVED BY / DATE

Testing results are based solely upon the sample submitted to Botanacor Services, LLC, in the condition it was received. Botanacor Services, LLC warrants that all analytical work is conducted professionally in accordance with all applicable standard laboratory practices using validated methods. Data was generated using an unbroken chain of comparison to NIST traceable Reference Standards and Certified Reference Materials. This report may not be reproduced, except in full, without the written approval of Botanacor Services, LLC.