

Sample: 1810CH0503.2159

Strain: OF - Canna Tsu

Batch#: ; Batch Size: - grams

Sample Received: 10/31/2018; Report Created: 11/07/2018; Expires: 11/07/2019

Harvest/Production Date:

Sampling: Random; Environment: Room Temp

Lic. #AG-R1040925IHG

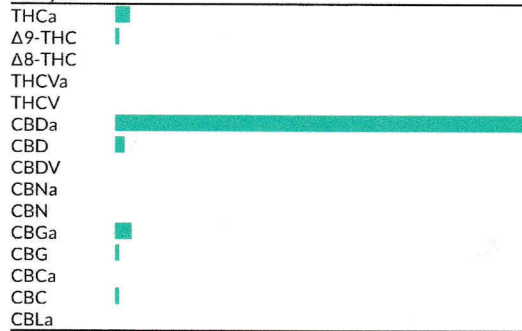
OF - Canna Tsu

Plant, Flower - Cured, Outdoor

Harvest Process Lot: ; METRC Batch: ; METRC Sample:



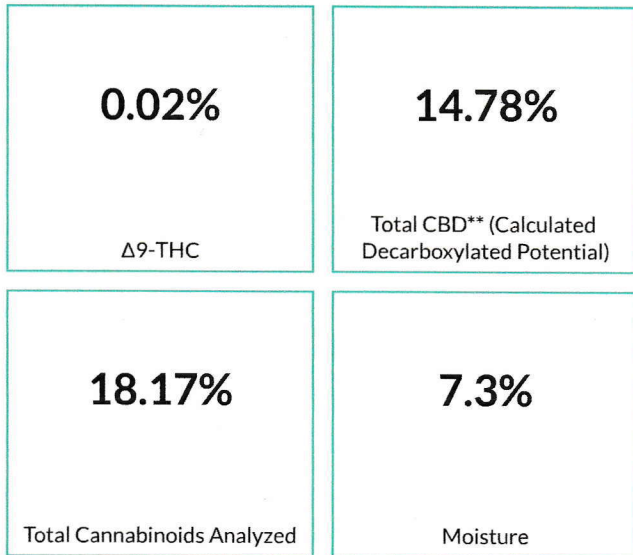
Analyte



Cannabinoids

276 HPLC3 20181102-1
11/02/2018

Pass



Analyte	LOQ	Mass	Mass
	mg/g	%	mg/g
THCa		0.58	5.8
Δ9-THC		0.02	0.2
Δ8-THC	<LOQ	<LOQ	<LOQ
THCVa	<LOQ	<LOQ	<LOQ
THCV	<LOQ	<LOQ	<LOQ
CBDa		16.45	164.5
CBD		0.36	3.6
CBDV	<LOQ	<LOQ	<LOQ
CBNa	<LOQ	<LOQ	<LOQ
CBN	<LOQ	<LOQ	<LOQ
CBGa		0.65	6.5
CBG		0.07	0.7
CBCa	<LOQ	<LOQ	<LOQ
CBC		0.05	0.5
CBLa	<LOQ	<LOQ	<LOQ
Total		18.17	181.7

*Total THC = THCa * 0.877 + d9-THC. **Total CBD = CBDa * 0.877 + CBD. LOQ = Limit of Quantification; NR = Not Reported; ND = Not Detected